

Office of State Auditor
Indianapolis Ind^a
July 24th 1854

I John P. Dunn Auditor of State, for the State
Of Indiana, Certify that the foregoing contains a full & correct copy of
the surveys & field notes of the County of DeKalb and State of Indiana,
as appears of record in this Office, from Original Copies thereof,

In Witness Whereof I have hereunto subscribed my name
and affixed the Seal of this Office, the day and year
above written.

John P. Dunn

Aud^r St



me

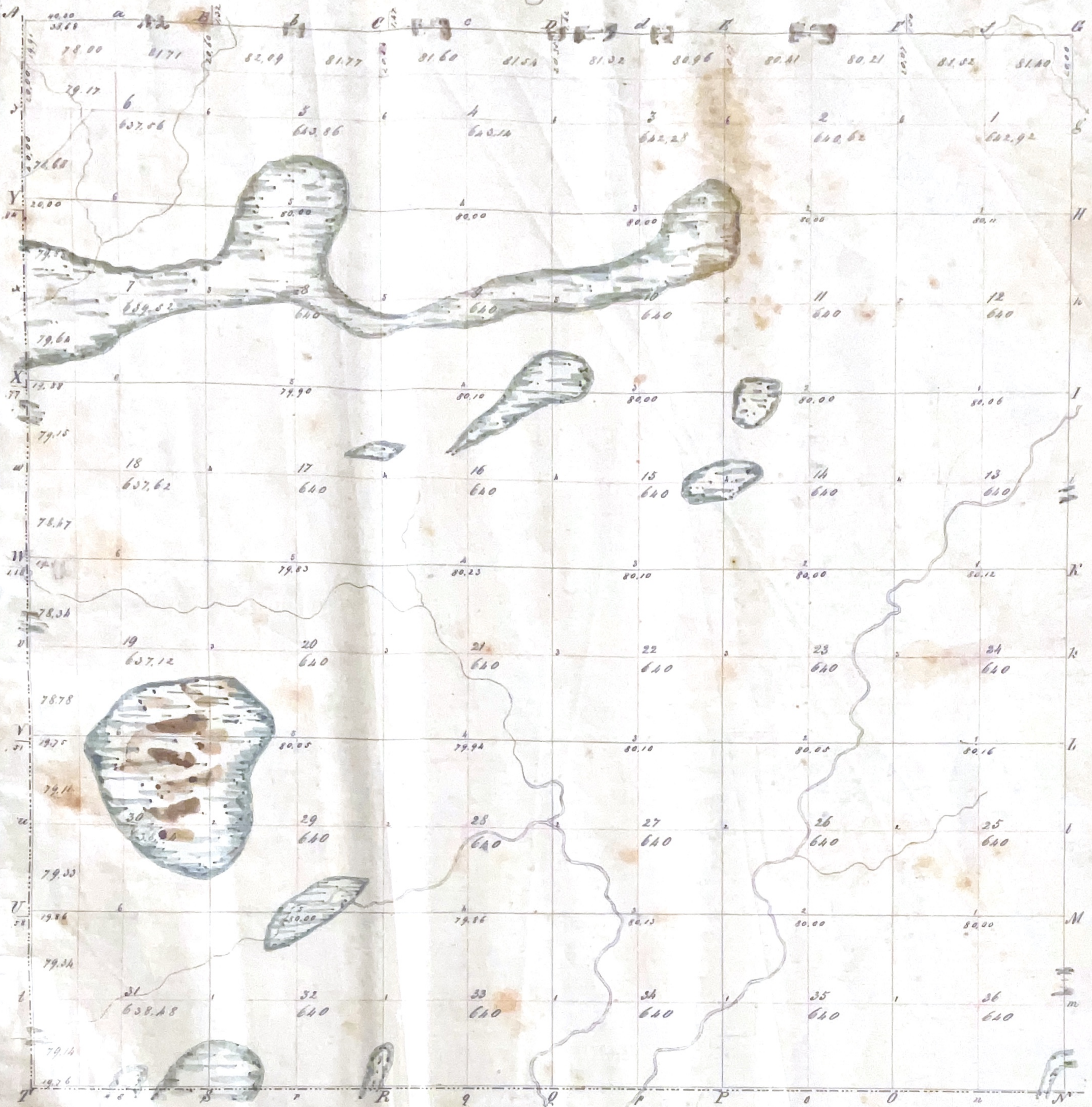
Township N. 33 North Range N. 12 East 2^d Meridian Indiana

Exterior Section & Quarter Section Corners Described

Interior Quarter Section Corners Described

Post	Bearing trees	Inches diam	Course they bear	Links distant	Post	Bearing trees	Inches diam	Course they bear	Links distant	Or Sec Posts on the Tract	Bearing trees	Inches diam	Course they bear	Links distant	Or Sec Posts on the Tract	Bearing trees	Inches diam	Course they bear	Links distant		
A	Sugar	42	N 14 W	33	u					N to East	Beech	18	N 74 E	6	P to East	Lynn	8	S 39 W	42		
a	Hickory	22	S 60 W	14	v	Hickory	14	S 56 W	15		Sugar	14	S 81 W	7		Sugar	8	N 61 W	24		
B	Elm	15	N 54 E	15		Beech	17	N 72 E	27	2	Lynn	18	N 11 W	16	2	Sugar	19	S 59 W	23		
b	Bush	18	West	3	u						Beech	17	S 27 E	19		R Oak	54	N 18 E	16		
C	Beech	17	S 35 E	36	w	B Ash	5	S 7 E	12	3	B Ash	5	N 31 E	24	3	Willow	6	S 23 E	15		
c	do	18	North	32	w	Beech	15	N 3 E	23	4	Beech	20	S 55 E	26	4	Elm	6	West	9		
D	Beech	17	S 16 E	29	X	Aspen	4	N 87 W	28		do	18	N 43 W	36	5	Mound in Prairie					
d	Sugar	14	N 76 W	31	a	do	6	N 19 E	36		do	15	N 48 E	12	5	Buckeye	12	S 25 W	23		
E	Cottonwood	17	S 76 E	42	Y	Ironwood	8	S 57 W	13	L to East	N Oak	7	N 63 E	18	Q to East	Aspen	18	N 20 E	23		
e	Beech	5	S 8 W	22	v	Cherry	18	N 74 E	14		do	7	N 76 W	8		S Ash	15	S 63 W	10		
F	Buckeye	6	S 76 E	7							do	18	S 55 W	18		Elm	14	N 19 E	13		
f	Elm	8	S 10 W	33							do	7	N 76 W	8		do	5	N 32 E	11		
					Interior Section Corners Described																
G	Beech	30	N 44 W	29	corner of section	Cherry	6	S 32 W	21		do	7	N 76 W	8		Beech	7	S 7 E	14		
g	do	22	N 75 E	28		N Oak	14	N 43 E	16		do	17	S 71 E	7		Lynn	14	N 14 E	11		
H	Sugar	23	N 29 W	37		Beech	24	South	28	K to West	Beech	24	N 17 E	16	R to East	Beech	16	N 78 E	8		
h	Beech	24	S 8 W	28		do	7	N 11 E	20		do	16	S 72 W	19		do	3	N 66 E	55		
i	Beech	22	N 57 W	31		Buckeye	18	S 81 W	8		2	Blue Ash	17	N 18 W	5		Beech	16	S 11 W	11	
i	Blue Ash	15	S 12 W	22		Beech	18	S 53 E	31		3	Beech	18	N 16 E	25		W Oak	18	N 77 E	27	
j	Elm	18	N 49 W	43		Beech	18	S 53 E	31		3	do	6	S 31 E	25		do	18	N 61 W	11	
k	Ironwood	5	S 59 W	20		do	22	N 57 W	14		4	Beech	21	N 28 W	31		2	W Oak	10	S 30 E	13
k	Lynn	30	N 7 W	17		Elm	18	N 29 W	18		4	do	20	S 18 W	11		do	12	N 20 E	25	
l	Elm	24	S 70 W	30		Lynn	20	S 29 E	13		5	Lynn	6	N 62 E	12		3	S Oak	15	West	2
l	B Oak	14	N 27 W	14		Sugar	22	S 11 E	40		5	Beech	22	S 10 W	19		4	Sugar	10	N 72 E	7
m	N Oak	8	S 32 W	25		Beech	13	N 77 W	22		6	Ironwood	6	N 36 E	10		4	Beech	22	S 76 E	11
m	Sugar	8	N 17 W	18		Elm	14	S 9 E	26		6	Sugar	12	S 23 W	28		5	Ironwood	6	S 76 W	11
n	B Oak	7	S 20 W	10		Ironwood	7	N 70 W	10		6	do	22	N 19 E	12		6	Beech	17	S 31 E	25
n	Ironwood	6	N 49 W	42		Beech	18	S 71 E	25		6	do	18	S 31 E	29		6	Beech	18	S 31 E	29
o	Sugar	16	S 28 W	1		do	6	S 45 W	24		6	Sugar	12	S 23 W	28		6	Beech	18	S 31 E	29
o	Beech	13	N 16 W	48		do	6	S 45 W	24		6	Beech	18	S 16 E	31		6	Beech	18	S 31 E	29
p	Sugar	15	S 41 W	29		Sycamore	18	S 30 W	20		6	do	21	N 17 W	21		6	Beech	18	S 31 E	29
p	B Oak	4	N 17 W	18		B Ash	13	N 58 W	3		6	do	21	N 17 W	21		6	Beech	18	S 31 E	29
q	Maple	30	S 70 W	22		Aspen	8	N 88 W	34		6	do	21	N 17 W	21		6	Beech	18	S 31 E	29
q	Beech	16	N 11 W	5		do	8	S 33 W	168		6	do	21	N 17 W	21		6	Beech	18	S 31 E	29
r	do	20	S 55 W	46		Beech	15	S 54 E	26		6	do	21	N 17 W	21		6	Beech	18	S 31 E	29
r	W Oak	11	N 61 W	47		do	18	N 54 W	10		6	do	21	N 17 W	21		6	Beech	18	S 31 E	29
s	Elm	12	S 23 W	17		Beech	8	S 31 E	27		6	do	21	N 17 W	21		6	Beech	18	S 31 E	29
s	Beech	17	N 70 W	45		do	16	S 75 W	25		6	do	21	N 17 W	21		6	Beech	18	S 31 E	29
t	W Oak	60	S 18 W	31		do	30	S 77 E	17		6	do	21	N 17 W	21		6	Beech	18	S 31 E	29
t	B Oak	20	N 70 E	10		do	32	S 23 W	18		6	do	21	N 17 W	21		6	Beech	18	S 31 E	29
t	do	23	N 63 W	17		do	32	S 23 W	18		6	do	21	N 17 W	21		6	Beech	18	S 31 E	29
u	Beech	16	N 45 E	41		Aspen	8	N 21 W	93		6	do	21	N 17 W	21		6	Beech	18	S 31 E	29
u	Ironwood	6	N 63 W	26		do	5	N 23 W	93		6	do	21	N 17 W	21		6	Beech	18	S 31 E	29
u	Beech	17	N 54 E	44		W Oak	36	S 41 W	30		6	do	21	N 17 W	21		6	Beech	18	S 31 E	29
v	Ironwood	6	N 7 W	8		Hickory	14	N 36 E	36		6	do	21	N 17 W	21		6	Beech	18	S 31 E	29
v	Sassafras	20	N 44 E	41		Maple	12	S 42 E	21		6	do	21	N 17 W	21		6	Beech	18	S 31 E	29
v	Ironwood	9	N 54 W	25		S Ash	17	N 10 W	10		6	do	21	N 17 W	21		6	Beech	18	S 31 E	29
w	Buckeye	9	N 40 E	29		R Oak	18	N 83 W	26		6	do	21	N 17 W	21		6	Beech	18	S 31 E	29
w	Elm	36	N 50 W	23		do	20	N 39 E	38		6	do	21	N 17 W	21		6	Beech	18	S 31 E	29
x	Beech	22	N 89 E	37		Beech	22	S 15 W	24		6	do	21	N 17 W	21		6	Beech	18	S 31 E	29
x	do	30	N 41 W	54		do	15	N 51 W	27		6	do	21	N 17 W	21		6	Beech	18	S 31 E	29
y	S Oak	25	N 72 E	23		Sugar	22	S 38 W	25		6	do	21	N 17 W	21		6	Beech	18	S 31 E	29
y	do	27	N 30 W	12		W Oak	10	N 65 E	23		6	do	21	N 17 W	21		6	Beech	18	S 31 E	29
z	W Oak	24	N 70 E	250		Sugar	12	N 41 W	5		6	do	21	N 17 W	21		6	Beech	18	S 31 E	29
z	do	27	S 5 E	176		Ironwood	6	S 29 E	17		6	do	21	N 17 W	21		6	Beech	18	S 31 E	29
aa	Hickory	12	N 85 E	112		B Ash	8	S 11 W	33		6	do	21	N 17 W	21		6	Beech	18	S 31 E	29
aa	W Oak	12	N 50 W	124		Elm	10	N 61 E	4		6	do	21	N 17 W	21		6	Beech	18	S 31 E	29
ab	W Oak	34	N 76 E	415		Willow	3	S 36 E	55		6	do	21	N 17 W	21		6	Beech	18	S 31 E	29
ab	do	18	N 83 E	362		do	4	S 34 E	55		6	do	21	N 17 W	21		6	Beech	18	S 31 E	29
ac	Elm	11	N 68 E	43		Beech	23	S 49 E	4		6	do	21	N 17 W	21		6	Beech	18	S 31 E	29
ac	do	8	N 33 E	47		do	30	S 73 W	22		6	do	21	N 17 W	21		6	Beech	18	S 31 E	29
ad	W Oak	24	N 31 W	15		W Oak	20	S 25 E	30		6	do	21	N 17 W	21		6	Beech	18	S 31 E	29
ad	do	14	S 24 W	47		do	18	N 63 W	13		6	do	21	N 17 W	21		6	Beech	18	S 31 E	29
ae						B Ash	8	S 21 W	10		6	do	21	N 17 W	21		6	Beech	18	S 31 E	29
ae	B Ash	16	S 15 W	56		do	16	N 11 E	10		6	do	21	N 17 W	21		6	Beech	18	S 31 E	29
ae	Maple	10	S 85 E	51							6	do	21	N 17 W	21		6	Beech	18	S 31 E	29

Township No 33 N. Range No 12 E. 2^d Mer. Ind^a.



Surveyed in 1829 by David Hillis — Deputy Surveyor.

[Faint handwritten text, possibly a signature or date]

18-10-18

Township N^o 34 N. Range N^o 12 E. 2^d. Mer. Ind^a.



Surveyed in 1851 by Geo W. Harrison Deputy Surveyor.

Township to 35 North. Range to 12 East 3rd Meridian Land

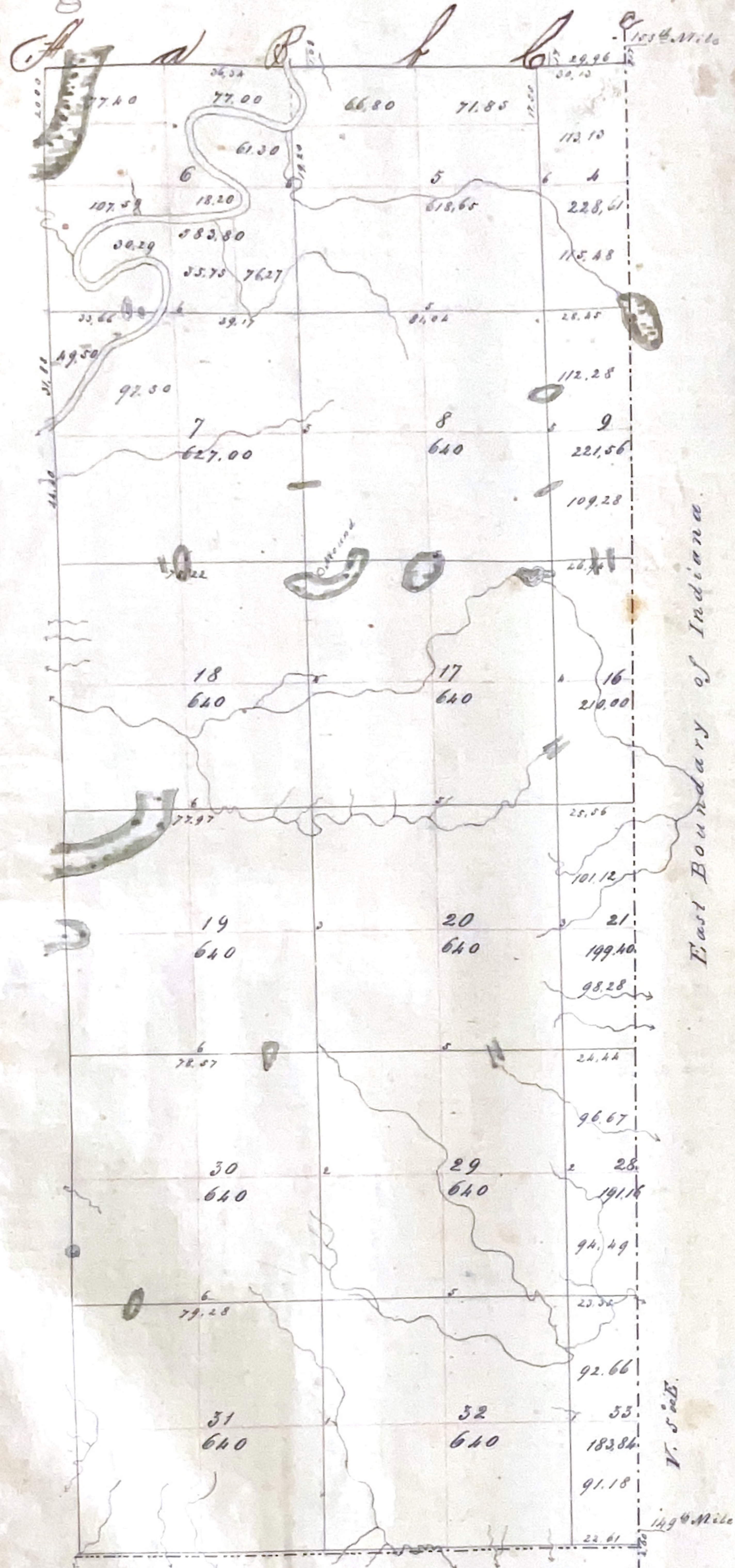
Exterior Section & Quarter Section Corners Described

Interior Quarter Section Corners Described

Point	Bearing	Inches	Course	Links	Point	Bearing	Inches	Course	Links	Point	Bearing	Inches	Course	Links	Point	Bearing	Inches	Course	Links		
	Truss	diam	They bear	dial		Truss	diam	They bear	dial		Truss	diam	They bear	dial		Truss	diam	They bear	dial		
A	Hickory	10	N 26 E	19	u					N to East	S Elm	4	N 55 E	10	P to East	Beech	7	S 13 E	10		
	do	12	N 67 W	23							B Ash	10	N 70 W	12		Elm	16	N 26 W	17		
	R Oak	18	S 59 W	18							2 Sugar	22	S 70 W	25		2 Elm	16	N 68 E	27		
a	B Ash	12	S 42 E	10	v	Beech	18	N 38 E	17			B Ash	24	S 9 E	9		do	5	N 27 W	34	
B	Ironwood	10	S 57 E	36								3 Beech	15	S 72 E	19		3 R Elm	24	N 57 W	39	
	B Ash	11	S 27 W	39								do	17	S 56 W	17		Beech	30	S 73 E	31	
b					w	Willow	8	S 47 E	15			4 Beech	24	S 74 E	13		4 Beech	8	S 53 E	9	
c	W Oak	18	S 1 E	50								do	30	N 33 W	8		Ironwood	7	S 42 W	20	
	do	12	S 38 W	36								5 Beech	7	N 4 E	5		5 Ash	20	N 13 E	27	
D	R Oak	20	S 3 E	93	x	B Ash	6	S 67 E	29			6 Ironwood	6	N 55 E	12		6 Beech	7	S 17 W	11	
	S Oak	15	S 6 E	85								Beech	20	S 24 W	21		do	6	S 28 E	14	
a					y	Ironwood	6	S 20 W	36	Z to East	R Elm	3	S 27 E	10	Q to East	Ironwood	6	N 60 W	8		
E	W Oak	6	S 20 W	20								do	5	N 28 W	5		Beech	8	N 73 E	14	
	B Ash	16	S 30 E	32	v	B Ash	15	S 81 E	53			2 Beech	19	S 67 W	12		2 Beech	16	N 62 E	9	
												do	16	N 88 E	10		do	3	S 56 W	8	
F	Beech	15	S 86 W	60								3 Beech	10	S 84 E	20		3 Beech	18	S 73 W	12	
	Ironwood	9	S 18 E	30								do	12	N 58 W	24		Sugar	15	S 9 E	22	
f												4 Beech	18	N 25 E	11		4 Ash	8	S 32 E	12	
G	W Oak	24	S 14 E	18	Interior Section Corners Described								do	13	S 27 W	28		S Ash	7	N 50 E	8
	W Oak	36	S 57 E	36	corners of section	Bearing	Inches	Course	Links			5 Ironwood	5	N 35 E	7		5 Beech	16	S 58 E	9	
	W Oak	20	S 61 W	46								Beech	24	N 65 W	41		do	4	N 12 E	22	
	S Oak	18	N 34 W	53								do	15	N 87 W	42		6 S Oak	10	S 67 E	30	
	Beech	12	Corner tree	23, 24, 25, 26								do	19	N 15 E	31		do	8	N 48 E	19	
	B Ash	12	Yret	23, 24, 25, 26								do	16	N 10 E	30		R to East	S Ash	9	South	5
H	B Ash	18	S 70 W	44								2 Beech	16	S 60 W	12		S Elm	13	S 64 E	15	
	Beech	16	N 10 W	43								Beech	40	N 84 E	11		2 Beech	12	S 29 E	16	
	B Ash	28	S 39 W	42								3 Blue Ash	4	N 60 W	7		do	14	S 85 W	19	
	Beech	6	N 30 W	36								4 Ash	5	S 73 E	15		3 Beech	4	S 92 E	10	
I	Beech	20	S 43 W	23								do	8	N 20 E	23		do	8	N 20 E	23	
	S Ash	23	N 31 W	16								4 Beech	10	N 41 W	23		4 Beech	18	N 48 W	27	
	Sugar	8	S 51 W	40								do	17	S 61 E	29		B Oak	20	N 60 E	19	
	Beech	18	N 37 W	36								5 Beech	36	S 58 E	31		5 Beech	13	S 13 E	17	
K	Beech	14	S 58 W	15								do	15	N 57 E	24		B Ash	24	N 23 W	8	
	do	24	N 29 W	38								6 Beech	18	S 54 E	16		6 Beech	9	N 87 W	5	
	Beech	3	N 33 W	18								do	24	S 40 W	15		do	7	S 7 E	6	
	do	10	S 13 W	15								I to East	Beech	13	N 50 E	20	S to East	R Elm	18	S 10 W	15
L	Ironwood	3	Corner tree	14, 15, 20, 23								do	16	S 45 W	20		Beech	10	S 82 E	18	
	Beech	18	N 9 W	38								2 Elm	15	S 85 E	60		2 W Oak	4	S 25 E	16	
	Beech	12	S 31 W	25								S Ash	10	S 69 W	57		B Oak	6	N 73 W	19	
	do	20	N 36 W	43								3 Sugar	26	N 20 W	7		3 Beech	30	S 20 W	17	
M	R Oak	30	N 41 W	35								Beech	6	N 39 E	6		do	7	East	13	
	R Oak	40	S 19 W	33								4 Beech	5	S 4 E	15		4 Beech	10	N 29 E	24	
	Willow	4	N 26 W	23								Sugar	16	N 30 E	12		do	13	S 79 W	5	
	do	4	S 48 W	2								5 Elm	6	East	24		5 W Beech	5	S 83 E	5	
	W Oak	12	S 77 E	14								do	8	S 38 E	19		S Elm	18	S 73 W	6	
	do	24	S 53 W	48								6 B Ash	18	S 8 E	25		6 Beech	24	S 33 E	13	
	do	24	N 41 W	34								Beech	11	N 70 W	8		do	20	N 15 W	33	
	do	24	N 22 E	38								B to East	Beech	24	N 77 E	14					
n	Sugar	18	N 24 E	43								do	15	S 45 W	10						
	do	4	S 48 W	2								2 Elm	15	S 85 E	60		2 W Oak	4	S 25 E	16	
	Sugar	18	N 73 E	44								S Ash	10	S 69 W	57		B Oak	6	N 73 W	19	
	Beech	16	N 51 W	54								3 Sugar	26	N 20 W	7		3 Beech	30	S 20 W	17	
	B Ash	14	N 5 E	11								Beech	6	N 39 E	6		do	7	East	13	
	Hickory	8	N 6 1/2 W	23								4 Beech	5	S 4 E	15		4 Beech	10	N 29 E	24	
P	Beech	22	N 81 W	33								Sugar	16	N 30 E	12		do	13	S 79 W	5	
	do	10	N 27 1/2 E	40								5 Elm	6	East	24		5 W Beech	5	S 83 E	5	
	Beech	6	N 61 W	14								do	8	S 38 E	19		S Elm	18	S 73 W	6	
	Poplar	18	N 43 E	24								6 B Ash	18	S 8 E	25		6 Beech	24	S 33 E	13	
Q	Sugar	22	N 52 1/2 W	28								Beech	11	N 70 W	8		do	20	N 15 W	33	
	Beech	6	N 35 E	34								do	24	N 77 E	14						
	Beech	8	N 56 W	12								B to East	Beech	24	N 77 E	14					
	Sugar	6	N 27 E	22								do	15	S 48 W	10						
R	Beech	8	N 73 W	22								2 Hickory	5	N 34 E	7						
	do	24	N 40 E	27								Ash	4	N 35 W	6						
	W Oak	28	N 58 1/2 W	15								3 Aspen	4	N 70 E	7						
	do	48	N 58 E	16								do	8	N 27 W	20						
S	Beech	12	N 61 W	33								4 Beech	17	S 48 W	27						
	B Ash	28	N 68 1/2 E	18								do	13	N 40 E	33						
	Beech	22	N 62 1/2 W	27								5 Sugar	20	S 18 W	24						
	do	28	N 49 E	58								Beech	15	N 57 W	17						
T	Beech	12	N 50 W	24								6 Beech	24	N 46 E	22						
	do	15	N 69 E	27								Sugar	13	S 39 W	33						
												O to East	Beech	26	S 63 W	10					
	Ironwood	12	S 33 E	10								do	20	N 64 E	5						
	B Oak	20	S 35 W	31								2 Beech	30	N 50 W	40						
												Ironwood	2	S 70 W	22						
												3 Beech	10	N 67 W	26						
												do	30	N 4 E	35						
												4 Beech	13	S 3 E	24						
												Ironwood	8	N 57 W	6						
												5 S Ash	36	S 39 W	11						

Township N^o 33 N.

Range N^o 15 E. 2^d Mer. Ind^o.



Surveyed in 1851 by Thomas Brown, D.S.

Township N^o 35 N. Range N^o 12 E. 2^d Mer. Ind^o.



Surveyed in 1831 by E. H. Lytle

Deputy Surveyor

40-24

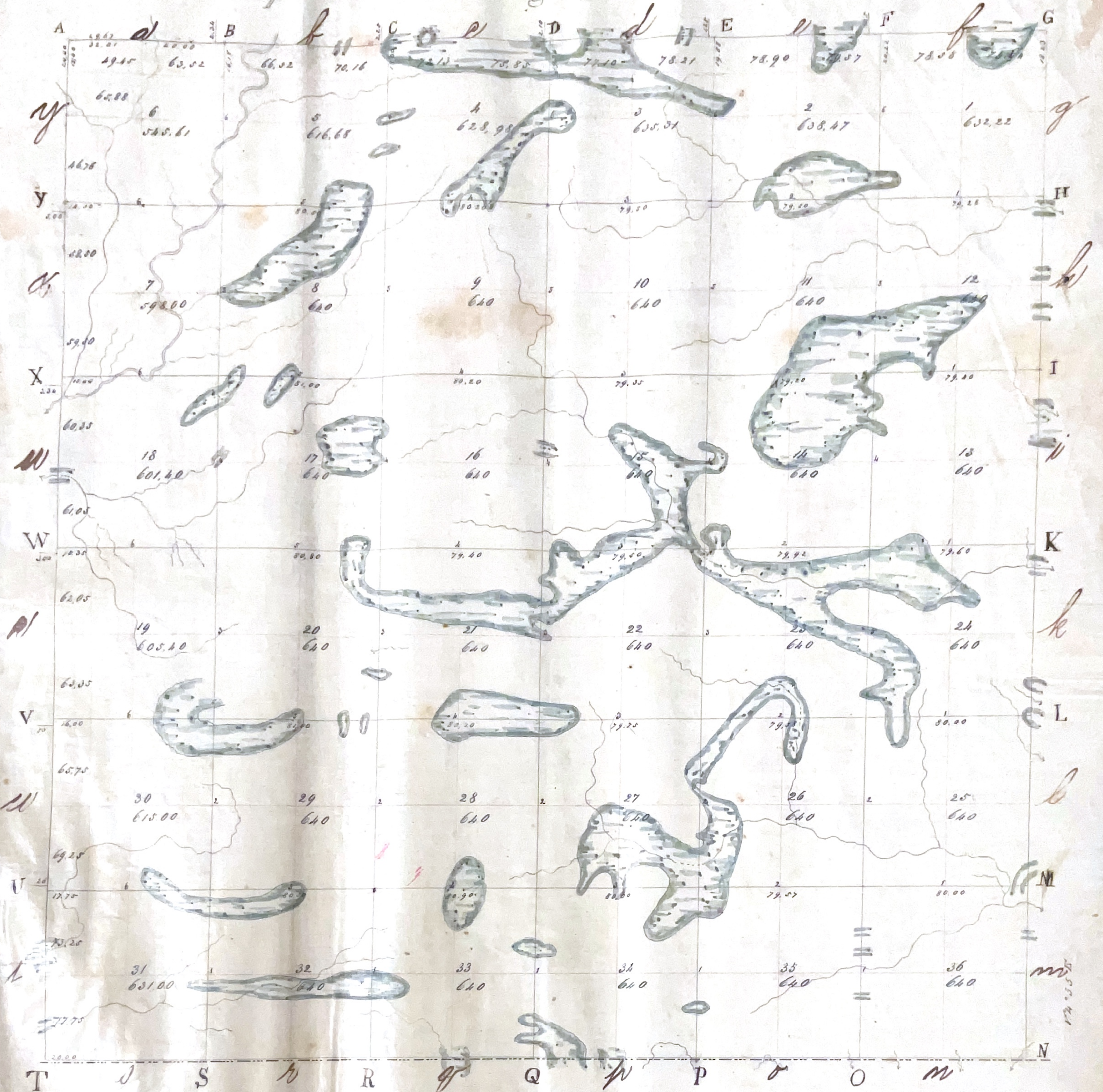
Township No 33 North Range No 13 East 2^d Meridian Indiana

Exterior Section and Quarter Section Corners Described

Interior Quarter Section Corners Described

Parts	Bearing	Inches	Courses	Links	Parts	Bearing	Inches	Courses	Links	Parts	Bearing	Inches	Courses	Links	Parts	Bearing	Inches	Courses	Links
	Traces	diam.	They bear	dist.		Traces	diam.	They bear	dist.	on Sec Posts on the Lines	Traces	diam.	They bear	dist.	on Sec Posts on the Lines	Traces	diam.	They bear	dist.
A	Beech	20	N 44 W	29	u					M to V at 1	Beech	12	N 56 W	5	P to E at 1	Beech	12	S 65 W	13
a	do	22	N 75 E	28	v	Sugar	10	N 65 E	38	2	Hickory	8	N 88 E	25	2	do	18	N 45 E	27
B	Sugar	16	S 80 E	30	v	Beech	12	S 20 E	27	3	Elm	6	S 70 E	3	2	W Oak	18	S 80 E	25
b	do	16	S 87 W	42	w					3	Willow	8	N 81 E	14	3	Maple	12	N 85 W	43
C	Beech	12	S 55 E	33	w	W Oak	10	S 33 E	75	4	Bottomwood	6	S 70 W	10	3	Beech	18	S 46 W	40
c	do	10	S 24 W	62	w	do	24	N 25 W	50	5	S Maple	10	N 23 E	9	4	do	10	N 70 E	25
D	Elm	10	S 48 W	15	x	Ash	10	N 37 W	20	5	H Elm	10	N 5 E	9	5	B Ash	8	N 10 W	8
d	Maple	12	S 50 E	20	x	Buckeye	14	S 71 E	45	6	Willow	8	South	19	do	12	S 6 E	25	
E	Elm	12	S 42 E	66	y	Beech	18	S 20 E	4	6	Sugar	12	S 25 W	37	5	Sugar	24	S 35 W	23
e	Maple	8	S 75 W	20	y	do	12	N 3 E	48	7	Beech	24	N 48 W	33	6	Beech	18	N 20 W	25
F	Beech	18	S 18 W	14						8	Hickory	12	S 10 E	22	7	W Oak	10	N 55 E	9
f	Beech	18	S 61 E	25						9	Beech	24	N 48 W	33	8	Hickory	12	N 77 W	16
Interior Section Corners Described										10	Beech	18	N 10 W	34	9	do	10	N 83 E	10
Corners of Sections										11	Hickory	12	S 10 E	22	10	do	12	S 75 W	9
g	Hickory	12	S 75 E	22	25	Beech	—	S 83 E	40	12	Hickory	10	N 60 E	14	11	Beech	8	N 45 W	11
h	W Oak	20	S 72 W	23	26	do	—	N 58 W	5	13	do	20	S 41 W	14	12	do	12	East	32
i	W Oak	24	N 60 W	36	27	Ash	10	S 65 E	58	14	do	20	S 41 W	14	13	do	12	East	32
j	W Oak	24	N 25 E	28	28	Beech	12	N 73 W	48	15	do	20	S 41 W	14	14	do	12	East	32
k	Beech	14	N 27 W	33	29	Beech	12	N 73 W	48	16	do	20	S 41 W	14	15	do	12	East	32
l	do	20	S 56 W	35	30	Ash	10	S 65 E	58	17	do	20	S 41 W	14	16	do	12	East	32
H	Beech	18	N 51 W	27	31	Beech	12	N 73 W	48	18	do	20	S 41 W	14	17	do	12	East	32
h	Ironwood	6	South	14	32	do	12	N 73 W	48	19	do	20	S 41 W	14	18	do	12	East	32
i	R Oak	28	S 30 W	20	33	do	12	N 73 W	48	20	do	20	S 41 W	14	19	do	12	East	32
I	Buckeye	16	N 19 W	21	34	do	12	N 73 W	48	21	do	20	S 41 W	14	20	do	12	East	32
l	W Oak	34	N 26 W	16	35	do	12	N 73 W	48	22	do	20	S 41 W	14	21	do	12	East	32
l	Beech	18	S 69 W	30	36	do	12	N 73 W	48	23	do	20	S 41 W	14	22	do	12	East	32
m	B Ash	6	N 25 W	39	37	do	12	N 73 W	48	24	do	20	S 41 W	14	23	do	12	East	32
K	Y Ash	10	S 21 W	32	38	do	12	N 73 W	48	25	do	20	S 41 W	14	24	do	12	East	32
k	W Oak	4	N 22 W	8	39	do	12	N 73 W	48	26	do	20	S 41 W	14	25	do	12	East	32
k	Cherry	4	S 31 W	15	40	do	12	N 73 W	48	27	do	20	S 41 W	14	26	do	12	East	32
k	Beech	18	S 47 W	50	41	do	12	N 73 W	48	28	do	20	S 41 W	14	27	do	12	East	32
l	do	4	N 44 W	42	42	do	12	N 73 W	48	29	do	20	S 41 W	14	28	do	12	East	32
L	Elm	10	South	28	43	do	12	N 73 W	48	30	do	20	S 41 W	14	29	do	12	East	32
l	W Oak	6	N 1 E	265	44	do	12	N 73 W	48	31	do	20	S 41 W	14	30	do	12	East	32
l	Sugar	4	N 20 W	12	45	do	12	N 73 W	48	32	do	20	S 41 W	14	31	do	12	East	32
m	do	5	S 71 W	32	46	do	12	N 73 W	48	33	do	20	S 41 W	14	32	do	12	East	32
m	R Oak	24	S 82 W	14	47	do	12	N 73 W	48	34	do	20	S 41 W	14	33	do	12	East	32
m	W Oak	16	N 43 W	37	48	do	12	N 73 W	48	35	do	20	S 41 W	14	34	do	12	East	32
m	Beech	20	S 77 W	31	49	do	12	N 73 W	48	36	do	20	S 41 W	14	35	do	12	East	32
n	do	20	N 47 W	54	50	do	12	N 73 W	48	37	do	20	S 41 W	14	36	do	12	East	32
n	R Oak	36	N 3 E	12	51	do	12	N 73 W	48	38	do	20	S 41 W	14	37	do	12	East	32
n	Ironwood	4	S 17 W	9	52	do	12	N 73 W	48	39	do	20	S 41 W	14	38	do	12	East	32
n	R Elm	8	N 57 E	8	53	do	12	N 73 W	48	40	do	20	S 41 W	14	39	do	12	East	32
o	Ironwood	4	S 77 W	16	54	do	12	N 73 W	48	41	do	20	S 41 W	14	40	do	12	East	32
o	B Ash	24	N 79 W	26	55	do	12	N 73 W	48	42	do	20	S 41 W	14	41	do	12	East	32
o	Beech	22	S 85 E	9	56	do	12	N 73 W	48	43	do	20	S 41 W	14	42	do	12	East	32
o	W Elm	20	S 69 E	11	57	do	12	N 73 W	48	44	do	20	S 41 W	14	43	do	12	East	32
o	W Beech	6	N 54 W	22	58	do	12	N 73 W	48	45	do	20	S 41 W	14	44	do	12	East	32
P	Maple	18	S 48 E	30	59	do	12	N 73 W	48	46	do	20	S 41 W	14	45	do	12	East	32
P	Beech	20	N 44 W	44	60	do	12	N 73 W	48	47	do	20	S 41 W	14	46	do	12	East	32
P	Post in Swamp				61	do	12	N 73 W	48	48	do	20	S 41 W	14	47	do	12	East	32
Q	B Oak	14	S 24 W	22	62	do	12	N 73 W	48	49	do	20	S 41 W	14	48	do	12	East	32
q	Hickory	14	N 10 E	50	63	do	12	N 73 W	48	50	do	20	S 41 W	14	49	do	12	East	32
q	W Elm		West	45	64	do	12	N 73 W	48	51	do	20	S 41 W	14	50	do	12	East	32
q	no other bearing tree				65	do	12	N 73 W	48	52	do	20	S 41 W	14	51	do	12	East	32
R	Hickory	4	N 37 E	17	66	do	12	N 73 W	48	53	do	20	S 41 W	14	52	do	12	East	32
r	Lynn	18	S 34 W	29	67	do	12	N 73 W	48	54	do	20	S 41 W	14	53	do	12	East	32
T	Sugar	24	S 48 E	19	68	do	12	N 73 W	48	55	do	20	S 41 W	14	54	do	12	East	32
s	Beech	14	N 47 W	40	69	do	12	N 73 W	48	56	do	20	S 41 W	14	55	do	12	East	32
S	B Oak	22	N 40 W	47	70	do	12	N 73 W	48	57	do	20	S 41 W	14	56	do	12	East	32
s	Beech	14	S 64 E	18	71	do	12	N 73 W	48	58	do	20	S 41 W	14	57	do	12	East	32
S	Beech	28	N 43 W	27	72	do	12	N 73 W	48	59	do	20	S 41 W	14	58	do	12	East	32
S	Lynn	14	S 56 E	1	73	do	12	N 73 W	48	60	do	20	S 41 W	14	59	do	12	East	32
T	Beech	17	N 70 W	15	74	do	12	N 73 W	48	61	do	20	S 41 W	14	60	do	12	East	32
T	W Oak	60	S 18 W	31	75	do	12	N 73 W	48	62	do	20	S 41 W	14	61	do	12	East	32
T					76	do	12	N 73 W	48	63	do	20	S 41 W	14	62	do	12	East	32
U	R Oak	10	N 55 E	20	77	do	12	N 73 W	48	64	do	20	S 41 W	14	63	do	12	East	32
u	Ash		S 54 E	30	78	do	12	N 73 W	48	65	do	20	S 41 W	14	64	do	12	East	32

Township No 33 N. Range No 13 E. 2d Mer. Ind^o.



Surveyed in 1831 by Geo. W. Harrison - Deputy Surveyor

