

Township No. 34 North . Range No 14 East 3rd Meridian Indiana

Exterior Section and Quarter Section Corners Described

Interior Quarter Section Corners Described

Point	Bearing	Inches diam	Courses They bear	Links distant
A	Beech	14	N 47 E 12	
	Brownwood	4	S 49 W 8	
	do	4	N 81 W 5	
	Beech	24	S 24 E 36	
B	Beech	14	S 37 E 54	
	do	14	S 58 W 45	
C	Beech	14	S 10 W 14	
	Elm	8	S 73 E 20	
D	Elm	10	S 32 W 23	
	Ash	20	S 30 E 39	
E	Beech	12	S 45 E 32	
	do	14	S 50 W 25	
F	Brownwood	6	S 75 E 20	
	Sugar	8	S 80 W 25	
G	R Oak	12	S 29 W 7	
	Elm	18	N 29 E 7	
	do	30	N 69 W 9	
H	Beech	32	N 63 W 18	
	do	32	S 24 W 40	
	B Oak	32	N 54 W 31	
	Buckeye	20	S 13 W 14	
	Beech	12	N 34 W 27	
	Ash	12	S 50 E 20	
I	R Oak	24	S 50 W 15	
	Hickory	6	N 28 W 30	
	Hickory	18	N 58 W 14	
	W Oak	22	S 20 E 19	
J	Elm	12	N 42 W 14	
	do	12	S 66 E 18	
	W Oak	20	S 34 W 24	
	do	20	N 5 W 14	
K	Hickory	18	N 42 W 14	
	R Oak	8	S 49 W 10	
	W Oak	10	N 2 E 37	
	W Oak	30	S 66 W 36	
	S Ash	12	N 61 W 37	
L	S Oak	12	S 37 W 27	
	do	12	N 28 W 22	
	R Oak	26	N 39 E 24	
	Elm	22	N 38 W 6	
M	Hickory	8	N 81 E 7	
	do	8	N 70 W 29	
N	W Oak	20	N 32 W 37	
	Brownwood	6	N 34 E 30	
	W Oak	4	N 31 E 18	
	Elm	20	N 45 W 38	
O	Willow	10	N 35 E 173	
	Elm	20	S 17 W 502	
P	W Oak	18	S 7 W 31	
	Hickory	16	N 86 E 16	
Q	S Ash	6	N 54 E 23	
	W Oak	10	N 78 W 18	
R	B Walnut	40	N 76 E 9	
	Beech	12	N 73 W 18	
	do	12	N 60 E 17	
	do	12	N 49 W 33	
	W Oak	8	N 6 E 18	
	do	18	S 66 E 10	
S	Elm	20	N 76 E 36	
	R Oak	10	N 21 W 48	
T	Ash	6	North 04	
	Elm	12	N 91 E 29	
	Hickory	12	S 75 E 22	
	W Oak	20	S 72 W 23	
	B Oak	24	N 60 W 36	
	W Oak	32	N 28 E 28	
U	S Ash	18	S 51 E 37	
	do	12	N 58 E 47	

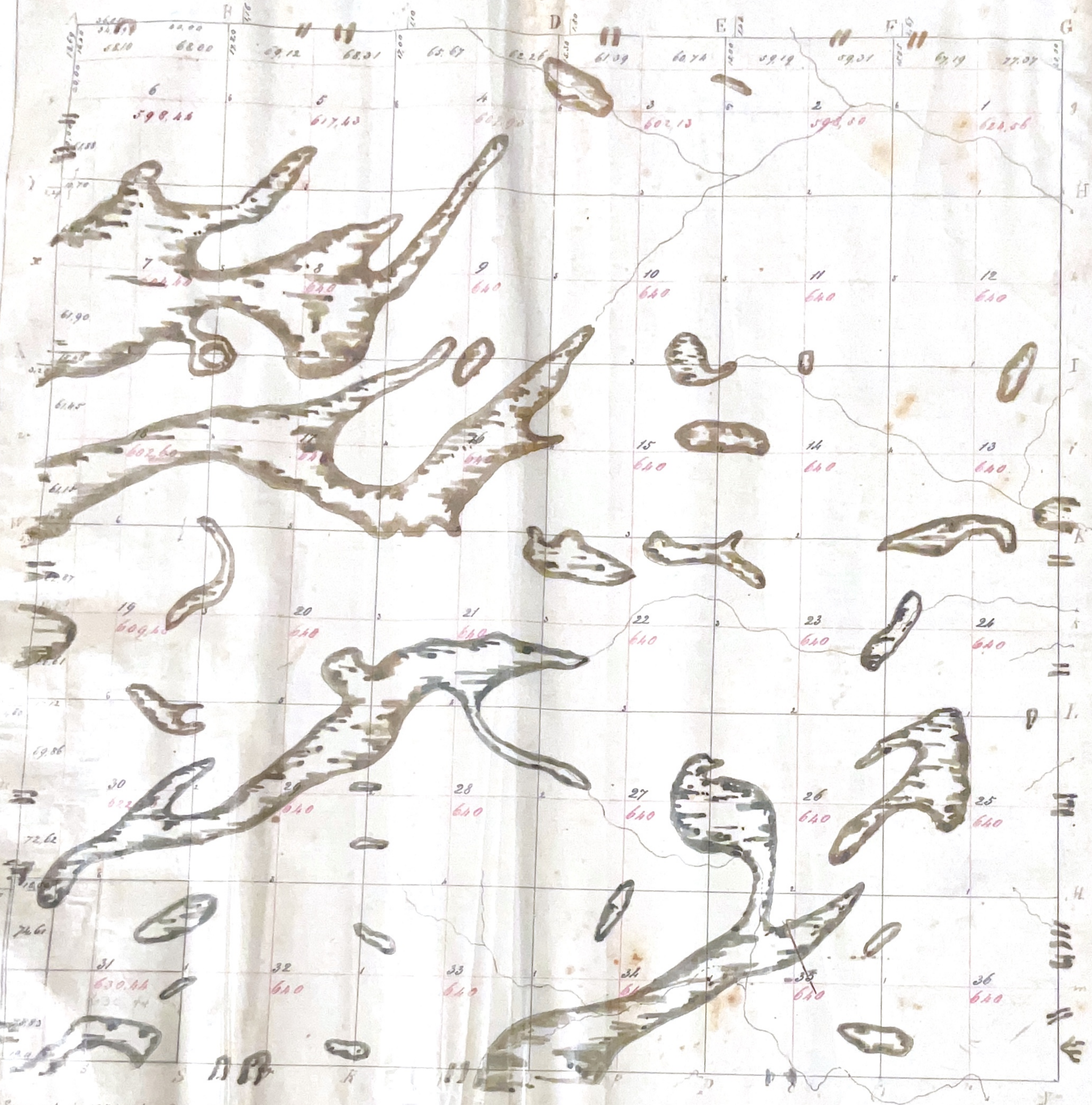
Interior Section Corners Described

Point	Bearing	Inches diam	Courses They bear	Links distant
u	Beech	30	N 58 E 60	
v	do	10	S 60 E 70	
w	Samarac	6	N 43 E 29	
	do	6	S 71 E 10	
x	Samarac	8	S 6 E 9	
	do	8	N 65 E 15	
y	Sugar	10	S 62 W 5	
	do	30	S 38 E 5	
1	Cottonwood	10	N 11 W 25	
	Oak	18	S 87 E 16	
	W Oak	24	S 20 W 30	
	do	20	S 35 E 33	
	B Oak	20	N 39 W 112	
	Elm	10	N 68 E 65	
	Beech	18	S 87 E 18	
	do	12	N 75 W 30	
	W Elm	24	N 65 W 4	
	Buckeye	12	S 83 E 14	
	Beech	20	S 57 E 27	
	do	10	N 83 W 20	
	Hickory	8	N 10 E 28	
	Brownwood	6	S 57 E 85	
	W Oak	15	S 40 E 12	
	do	20	N 62 W 6	
	Willow	6	S 22 W 8	
	do	4	S 87 W 10	
	Cherry	12	S 52 E 26	
	Elm	8	N 43 E 14	
	S Ash	24	N 77 W 47	
	Beech	20	S 82 E 14	
	Beech	14	N 19 W 23	
	do	30	N 47 E 61	
	W Oak	20	N 12 E 17	
	do	28	S 32 E 39	
	Cottonwood	16	N 14 E 37	
	W Elm	6	N 78 W 6	
	Beech	10	S 65 E 20	
	do	14	S 70 W 18	
	Beech	10	S 22 E 18	
	do	12	S 49 W 16	
	Samarac	10	N 35 W 60	
	do	10	N 20 E 70	
	S Elm	8	N 70 E 50	
	do	12	N 85 W 37	
	Brownwood	10	S 45 E 11	
	Poplar	10	N 40 W 27	
	Beech	14	S 78 E 16	
	do	12	S 40 W 55	
	Maple	18	S 45 W 42	
	Elm	14	S 80 E 22	
	Cottonwood	10	S 32 E 35	
	Samarac	14	N 85 W 30	
	Beech	15	N 55 E 23	
	W Oak	24	N 58 W 34	
	W Oak	15	N 54 W 45	
	do	10	N 52 E 11	
	Beech	10	S 40 E 16	
	R Oak	12	N 16 W 23	

Point	Bearing	Inches diam	Courses They bear	Links distant
AL to D	Elm	10	S 70 E 18	
	B Oak	36	N 22 W 24	
2	Hickory	24	S 34 W 16	
	W Oak	6	N 19 E 16	
3	S Cherry	8	N 37 W 112	
	Aspen	10	S 41 W 80	
4	Maple	30	N 43 W 10	
	Sugar	12	S 2 1/2 E 25	
5	Beech	12	N 50 E 23	
	Hickory	18	S 63 W 24	
6	Beech	12	N 13 W 40	
	Walnut	36	S 27 W 38	
AL to E	Elm	10	N 13 E 14	
	do	10	N 74 W 30	
2	Hickory	30	N 85 E 7	
	Brownwood	8	S 79 W 47	
3	S Ash	18	S 39 E 22	
	Sym	36	N 7 E 12	
4	W Oak	20	N 74 W 21	
	do	25	S 25 E 18	
5	Beech	18	N 27 W 21	
	do	12	S 27 E 32	
6	B Oak	18	N 21 W 42	
	S Ash	20	S 55 W 31	
AL to F	B Oak	12	S 9 W 13	
	W "	20	N 38 E 20	
2	W Oak	24	N 63 W 20	
	do	36	S 85 E 20	
3	W Oak	8	N 70 W 6	
	do	6	S 69 E 6	
4	W Oak	18	N 45 E 23	
	Hickory	10	S 75 W 11	
5	W Oak	30	S 5 E 45	
	do	15	N 30 E 15	
6	Beech	10	S 32 E 22	
	Hickory	10	S 60 W 19	
AL to G	Hickory	18	S 55 E 20	
	Maple	15	S 53 W 12	
2	Hickory	12	S 48 W 215	
	Buckeye	10	N 80 E 248	
3	Maple	18	S 71 W 28	
	Willow	12	N 46 E 30	
4	R Oak	12	S 73 E 480	
	Samarac	8	East 190	
5	Ash	6	S 26 W 116	
	Samarac	6	S 35 W 112	
6	Samarac	6	S 16 E 4	
	do	6	N 55 W 10	
AL to H	Beech	10	North 8	
	do	15	S 44 E 15	
2	W Oak	24	N 75 E 45	
	Beech	18	N 73 W 20	
3	Beech	12	S 45 E 12	
	do	15	N 81 W 38	
4	Ash	10	S 41 E 10	
	Cottonwood	6	N 37 W 14	
5	Ash	20	N 5 E 18	
	Brownwood	18	S 61 W 10	
6	Ash	6	S 70 W 250	
	Willow	6	N 3 E 220	
AL to I	W Oak	36	S 87 W 5	
	Hickory	10	S 32 E 36	
2	W Oak	12	N 18 E 245	
	B Oak	36	N 25 W 243	
3	B Oak	12	N 14 W 15	
	Ash	8	N 75 E 25	
4	R Oak	10	N 70 E 25	
	Ash	8	N 71 W 18	
5	Hickory	30	S 70 W 7	
	Beech	12	N 44 E 13	
6	Buckeye	12	N 30 E 20	
	Hickory	12	S 60 W 10	

Township N. 54 N. Range N. 14 E. 2^d Mer. Ind. ¹⁹

19



Surveyed in 1851 by Geo. W. Harrison Deputy Surveyor

7.5.00 E

Township No 35 N. Range No 14 E. 2d Mer. Ind.



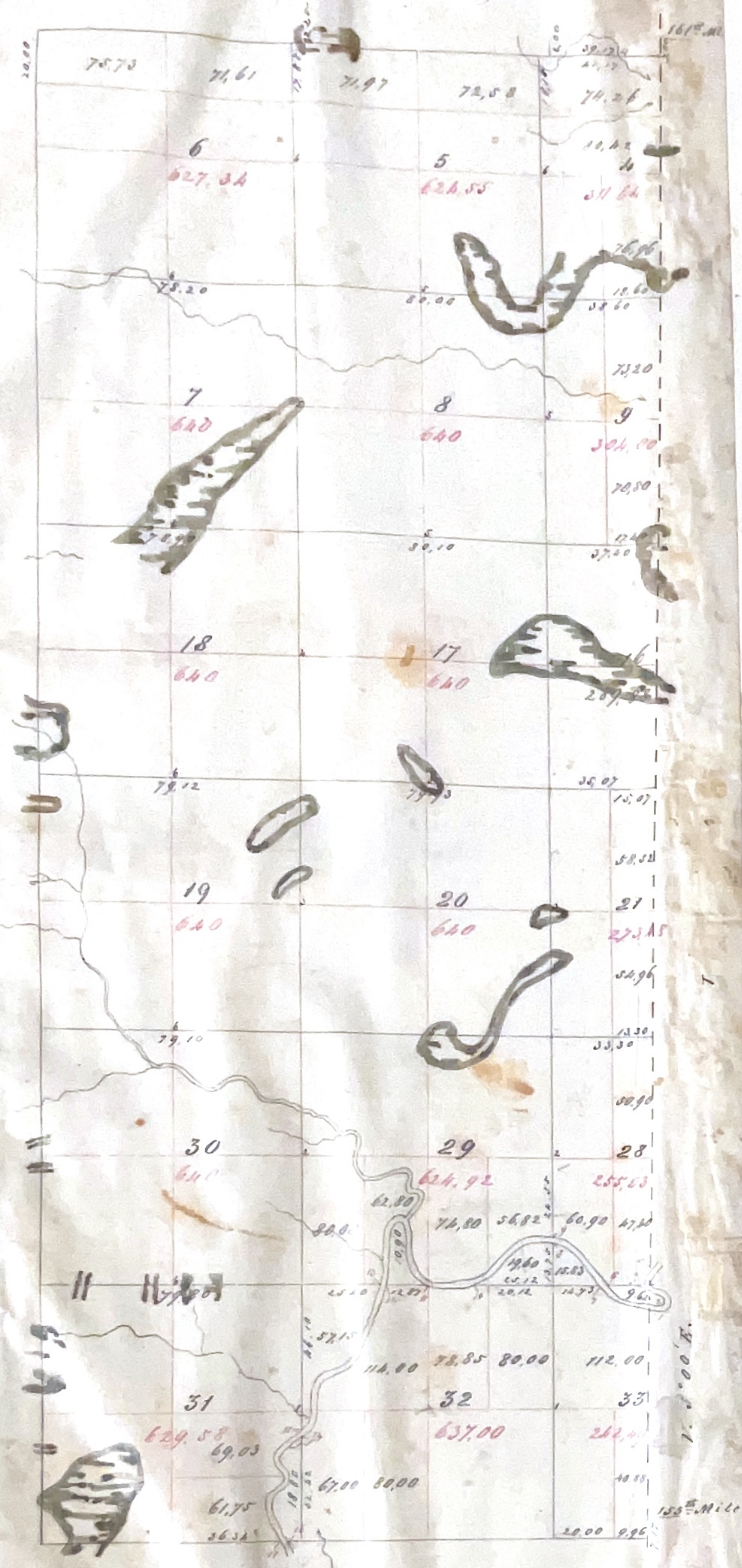
Surveyed in 1831 by Edward H. Lytle - Deputy Surveyor

Final

57
11
7

12
10
10
10

Township N^o: 54 N.
Range N^o: 15 E. 2^d. Mer.



1000.00
273.15
244.47
13.43
167.10
503.10

Surveyed in 1851 by Geo. W. Harrison, D.S.

St. Paul

